
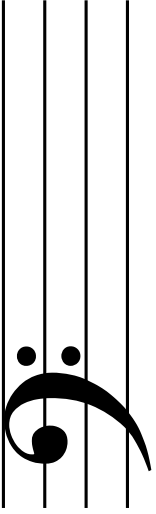
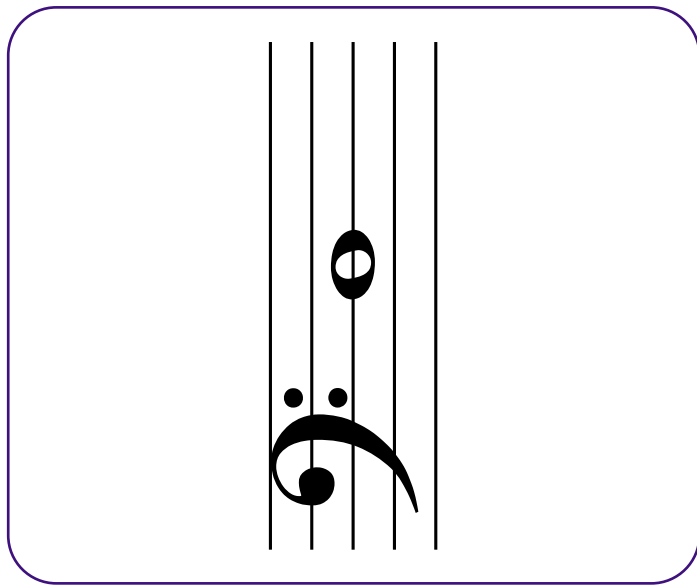
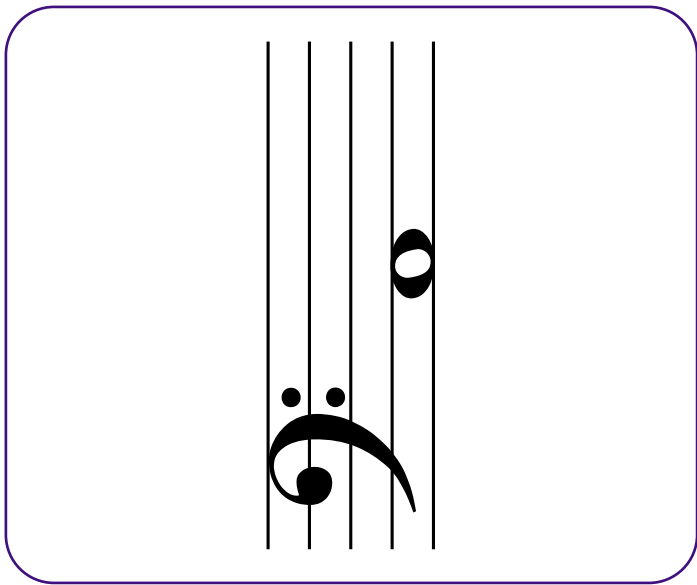
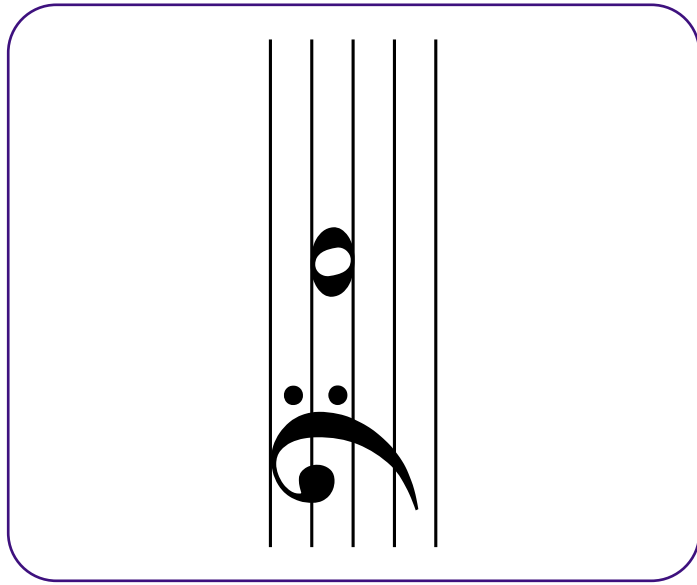
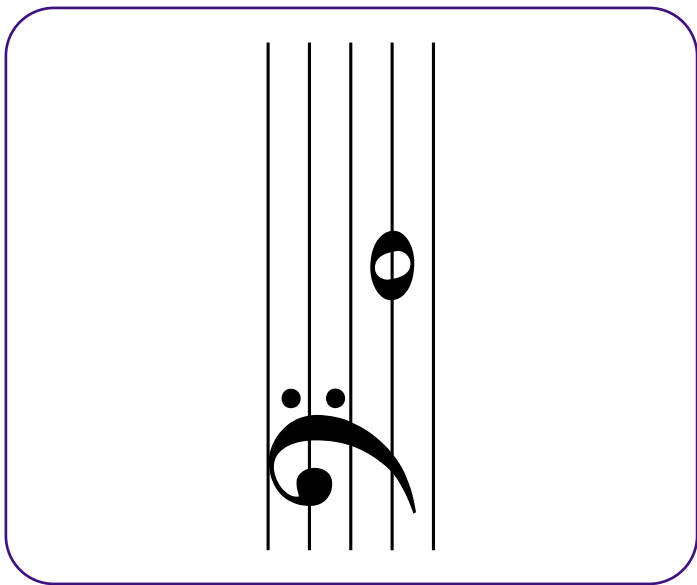
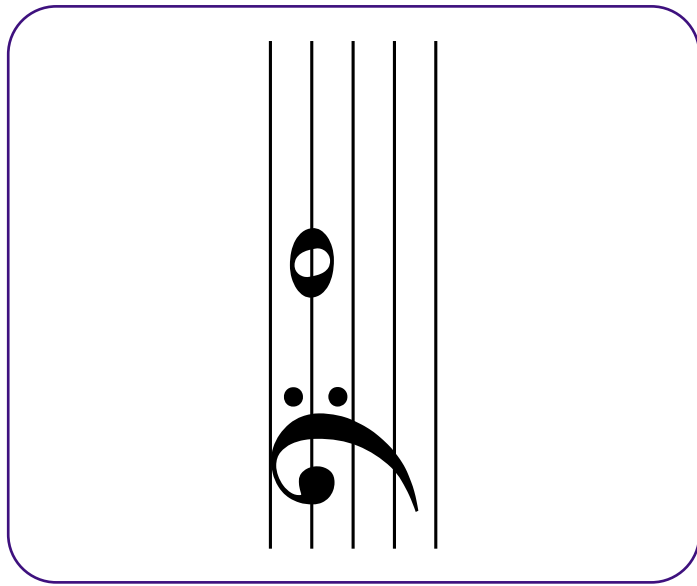
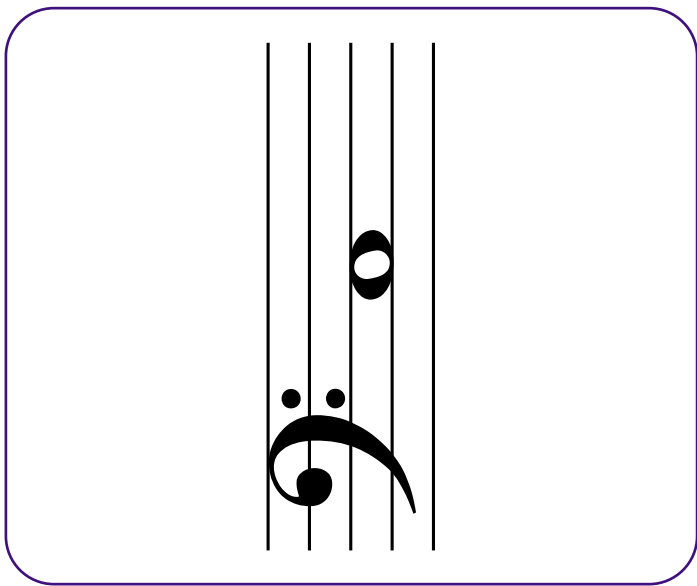


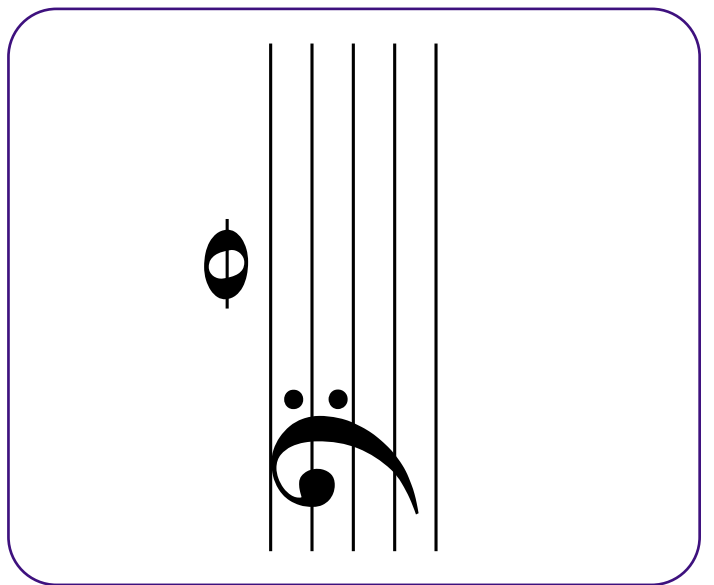
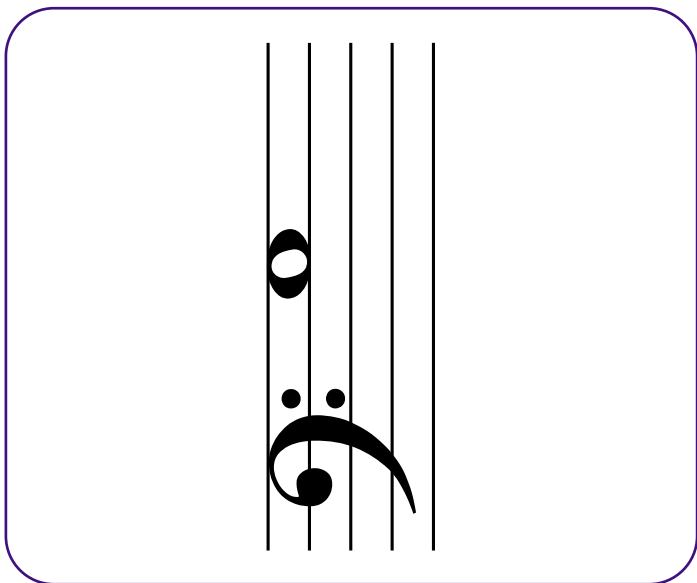
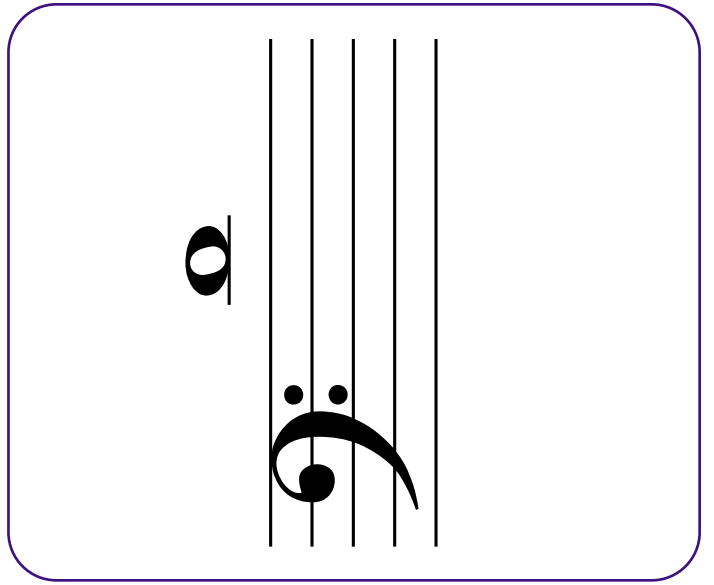
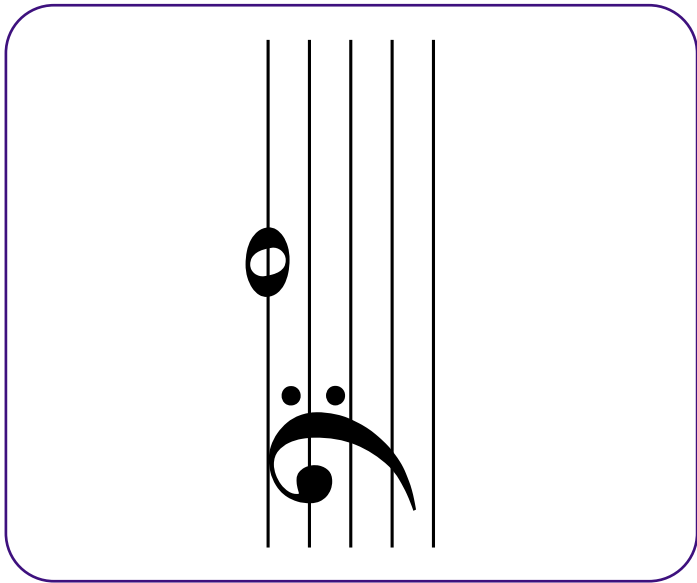
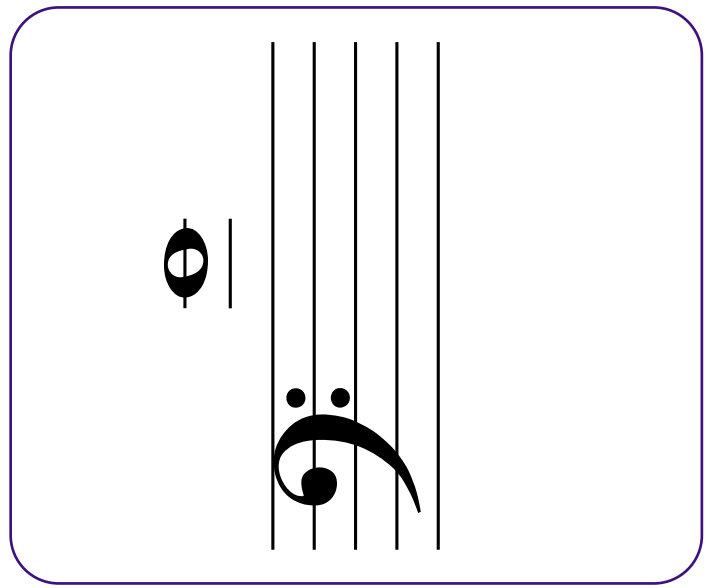
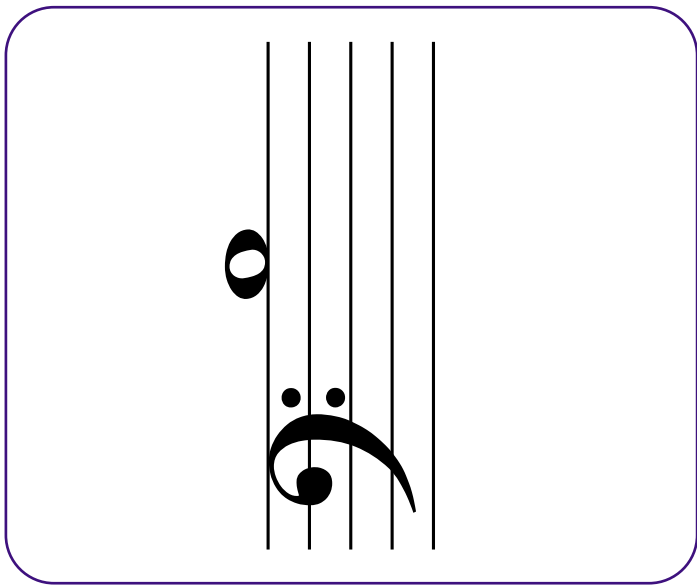
Bass Clef
Flash Cards

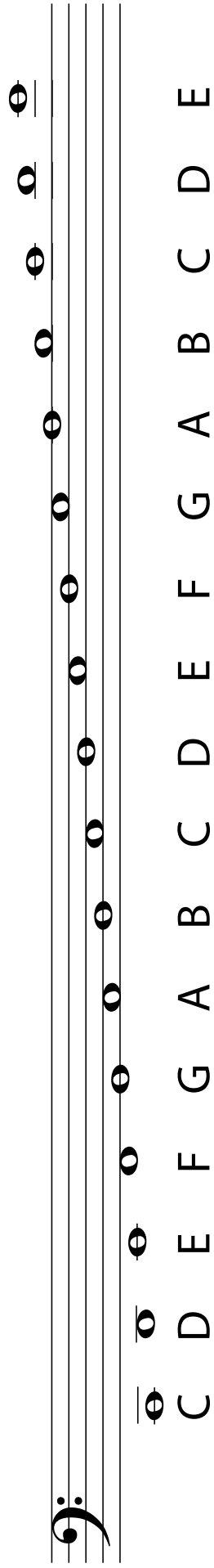


www.makingmusicfun.net









A musical staff with a bass clef and a key signature of one flat (B-flat). The staff contains 15 quarter notes, each with a letter below it. The notes and letters are: C (below the staff), D (first line), E (first space), F (first space, flat), G (second line), A (second space), B (second space, flat), C (third line), D (third space), E (third space), F (third space, flat), G (fourth line), A (fourth space), B (fourth space, flat), C (fifth line), D (fifth space), E (fifth space).

