

MBDA 9-10 Honor Band Flute Scales

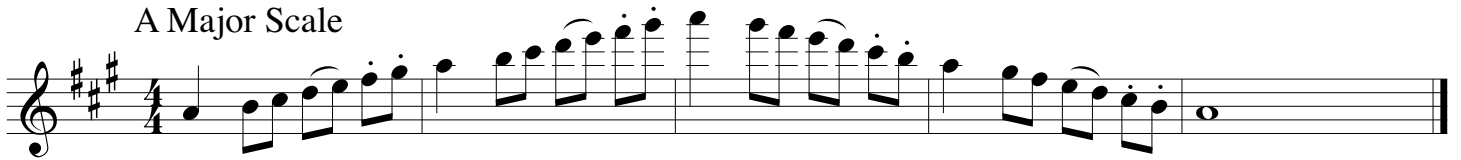
♩ = 120

E Major Scale



Musical notation for the E Major Scale in 4/4 time. The key signature has three sharps (F#, C#, G#). The scale is written on a single staff with a treble clef. It consists of an ascending line of eighth notes and a descending line of eighth notes, ending with a whole note E.

A Major Scale



Musical notation for the A Major Scale in 4/4 time. The key signature has three sharps (F#, C#, G#). The scale is written on a single staff with a treble clef. It consists of an ascending line of eighth notes and a descending line of eighth notes, ending with a whole note A.

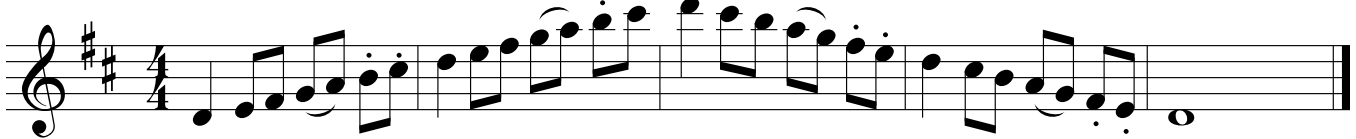
Chromatic Scale




Musical notation for the Chromatic Scale in 4/4 time. The scale is written on a single staff with a treble clef. It consists of an ascending line of eighth notes and a descending line of eighth notes, covering the full range of the staff. The notes are chromatic, moving by half steps. The descending line ends with a whole note E.

MBDA 9-10 Honor Band Oboe Scales

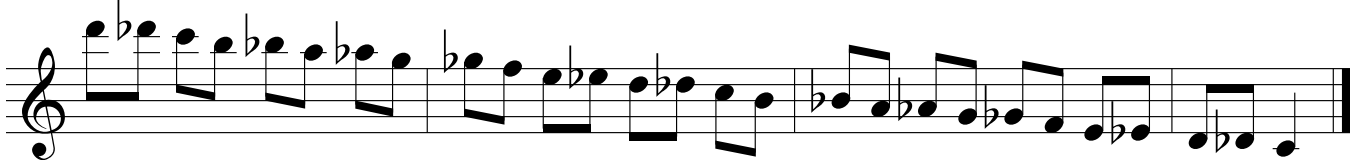
D



A \flat



Chromatic

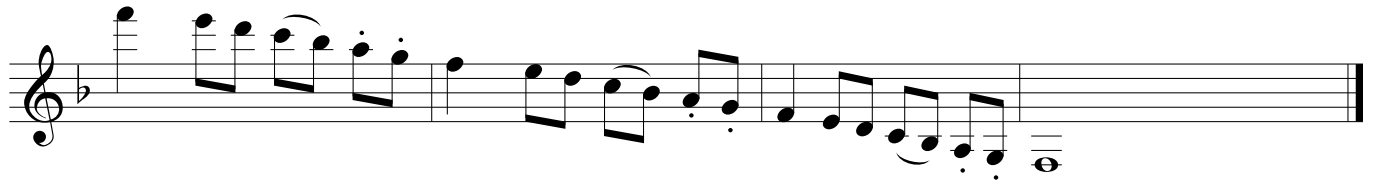
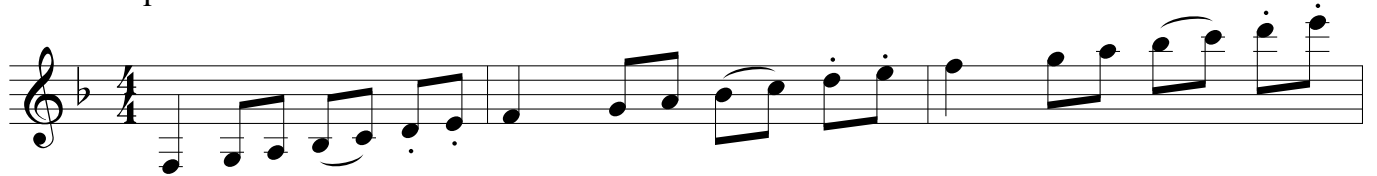


MBDA 9-10 Honor Band Clarinet Scales

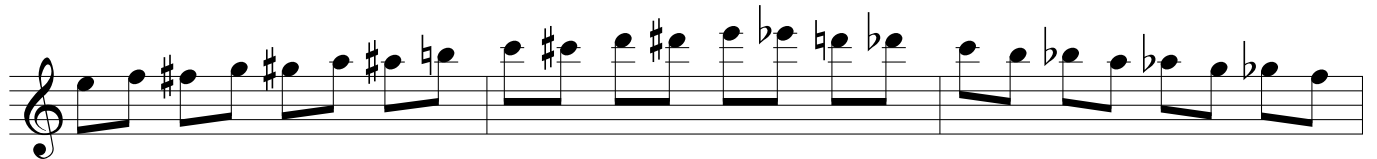
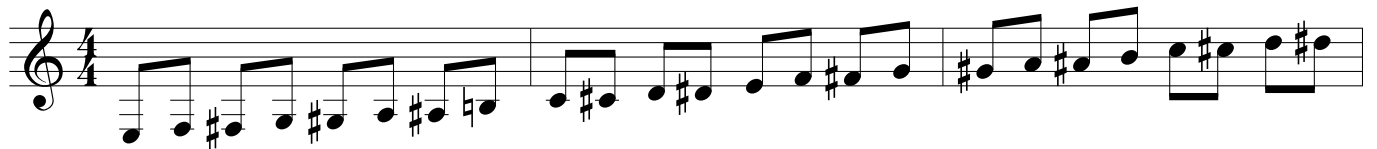
Ab



F



Chromatic



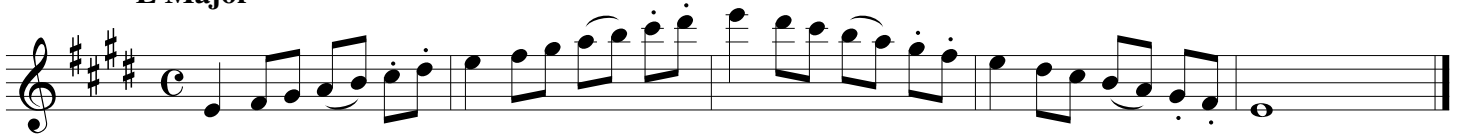
MBDA 9-10 Honor Band Alto & Tenor Sax Scales

♩ = 120

F Major



E Major



Chromatic



MBDA 9-10 Honor Band Bari Sax Scales

♩ = 120

F Major



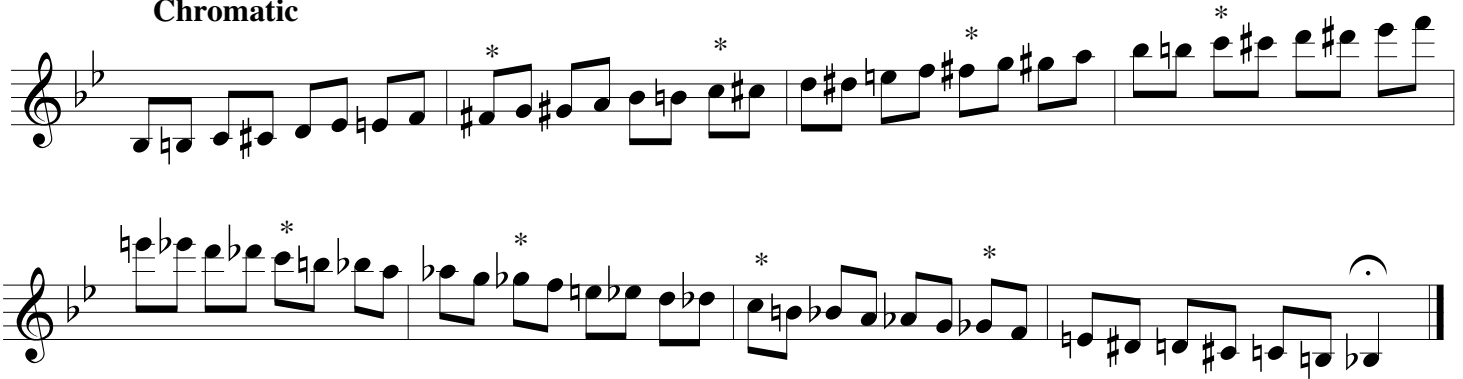
Musical notation for the F Major scale in treble clef, common time. The scale consists of the notes F, G, A, Bb, C, D, E, F. The notation includes slurs and accents over the notes.

Bb Major



Musical notation for the Bb Major scale in treble clef, common time. The scale consists of the notes Bb, C, D, Eb, F, G, A, Bb. The notation includes slurs and accents over the notes.

Chromatic



Musical notation for the chromatic scale in treble clef, common time. The scale consists of the notes Bb, B, C, C#, D, D#, E, F, F#, G, G#, A, A#, B. The notation includes slurs and accents over the notes, and asterisks above the notes B, C#, D#, F#, G#, and A#.

MBDA 9-10 Honor Band Bassoon Scales

A Major

Musical notation for the A Major scale in bass clef, 4/4 time. The scale is written on a single staff and consists of 14 notes: A2, B2, C3, D3, E3, F#3, G#3, A3, G#3, F#3, E3, D3, C3, B2, A2. The notes are grouped into four measures of four notes each. The first measure contains A2, B2, C3, and D3. The second measure contains E3, F#3, G#3, and A3. The third measure contains G#3, F#3, E3, and D3. The fourth measure contains C3, B2, A2, and a whole rest.

A \flat Major

Musical notation for the A-flat Major scale in bass clef, 4/4 time. The scale is written on a single staff and consists of 14 notes: A \flat 2, B \flat 2, C3, D3, E3, F3, G3, A3, G3, F3, E3, D3, C3, B \flat 2, A \flat 2. The notes are grouped into four measures of four notes each. The first measure contains A \flat 2, B \flat 2, C3, and D3. The second measure contains E3, F3, G3, and A3. The third measure contains G3, F3, E3, and D3. The fourth measure contains C3, B \flat 2, A \flat 2, and a whole rest.

Chromatic

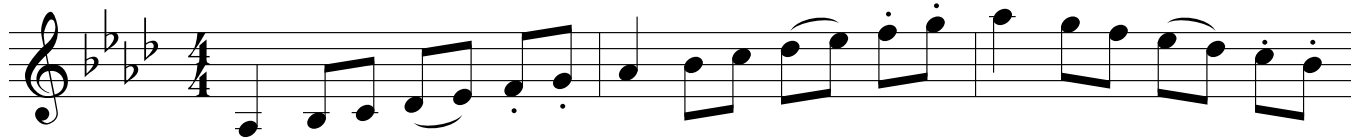
Musical notation for the chromatic scale in bass clef, 4/4 time. The scale is written on a single staff and consists of 14 notes: A \flat 2, A2, B \flat 2, B2, C3, C#3, D3, D#3, E3, E#3, F3, F#3, G3, G#3, A3. The notes are grouped into four measures of four notes each. The first measure contains A \flat 2, A2, B \flat 2, and B2. The second measure contains C3, C#3, D3, and D#3. The third measure contains E3, E#3, F3, and F#3. The fourth measure contains G3, G#3, A3, and a whole rest.

Musical notation for the chromatic scale in bass clef, 4/4 time. The scale is written on a single staff and consists of 14 notes: A3, A#3, B3, B#3, C4, C#4, D4, D#4, E4, E#4, F4, F#4, G4, G#4, A4. The notes are grouped into four measures of four notes each. The first measure contains A3, A#3, B3, and B#3. The second measure contains C4, C#4, D4, and D#4. The third measure contains E4, E#4, F4, and F#4. The fourth measure contains G4, G#4, A4, and a whole rest.

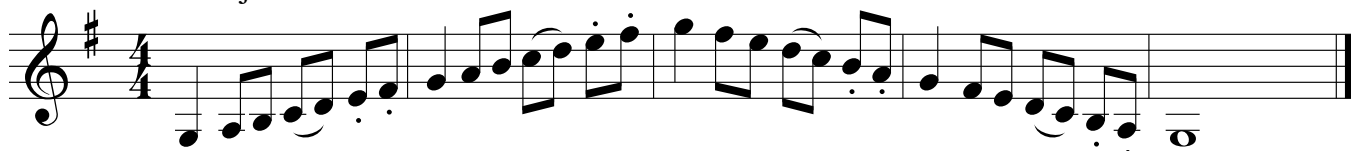
Musical notation for the chromatic scale in bass clef, 4/4 time. The scale is written on a single staff and consists of 14 notes: A4, A#4, B4, B#4, C5, C#5, D5, D#5, E5, E#5, F5, F#5, G5, G#5, A5. The notes are grouped into four measures of four notes each. The first measure contains A4, A#4, B4, and B#4. The second measure contains C5, C#5, D5, and D#5. The third measure contains E5, E#5, F5, and F#5. The fourth measure contains G5, G#5, A5, and a whole rest.

MBDA 9-10 Honor Band Horn Scales

Ab Major



G Major



Chromatic



MBDA 9-10 Honor Band Trombone/Euphonium Scales

G Major

First line of musical notation for the G Major scale in bass clef, 4/4 time. It begins with a G4 quarter note, followed by an eighth-note pair (A4, B4), a quarter-note pair (C5, B4), and a quarter-note pair (A4, G4). The second measure contains an eighth-note pair (F#4, E4), a quarter-note pair (D4, C4), and a quarter-note pair (B3, A3). The third measure contains an eighth-note pair (G3, F#3), a quarter-note pair (E3, D3), and a quarter-note pair (C3, B2). The fourth measure contains an eighth-note pair (A2, G2), a quarter-note pair (F#2, E2), and a quarter-note pair (D2, C2). The fifth measure contains an eighth-note pair (B1, A1), a quarter-note pair (G1, F#1), and a quarter-note pair (E1, D1). The sixth measure contains an eighth-note pair (C2, B1), a quarter-note pair (A1, G1), and a quarter-note pair (F#1, E1). The seventh measure contains an eighth-note pair (D2, C2), a quarter-note pair (B1, A1), and a quarter-note pair (G1, F#1). The eighth measure contains an eighth-note pair (E2, D2), a quarter-note pair (C2, B1), and a quarter-note pair (A1, G1). The scale concludes with a whole note G2.

Second line of musical notation for the G Major scale in bass clef, 4/4 time. It begins with a whole note G2, followed by a half-note pair (A2, B2), a quarter-note pair (C3, B2), and a quarter-note pair (A2, G2). The scale concludes with a whole note G2.

A^b Major

First line of musical notation for the A-flat Major scale in bass clef, 4/4 time. It begins with an A3 quarter note, followed by an eighth-note pair (B3, A3), a quarter-note pair (C4, B3), and a quarter-note pair (A3, G3). The second measure contains an eighth-note pair (F#3, E3), a quarter-note pair (D3, C3), and a quarter-note pair (B2, A2). The third measure contains an eighth-note pair (G2, F#2), a quarter-note pair (E2, D2), and a quarter-note pair (C2, B1). The fourth measure contains an eighth-note pair (A1, G1), a quarter-note pair (F#1, E1), and a quarter-note pair (D1, C1). The fifth measure contains an eighth-note pair (B1, A1), a quarter-note pair (G1, F#1), and a quarter-note pair (E1, D1). The sixth measure contains an eighth-note pair (C2, B1), a quarter-note pair (A1, G1), and a quarter-note pair (F#1, E1). The seventh measure contains an eighth-note pair (D2, C2), a quarter-note pair (B1, A1), and a quarter-note pair (G1, F#1). The eighth measure contains an eighth-note pair (E2, D2), a quarter-note pair (C2, B1), and a quarter-note pair (A1, G1). The scale concludes with a whole note A2.

Chromatic

First line of musical notation for the chromatic scale in bass clef, 4/4 time. It begins with a G3 quarter note, followed by an eighth-note pair (A3, G3), a quarter-note pair (B3, A3), and a quarter-note pair (C4, B3). The second measure contains an eighth-note pair (D4, C4), a quarter-note pair (E4, D4), and a quarter-note pair (F4, E4). The third measure contains an eighth-note pair (G4, F4), a quarter-note pair (A4, G4), and a quarter-note pair (B4, A4). The fourth measure contains an eighth-note pair (C5, B4), a quarter-note pair (D5, C5), and a quarter-note pair (E5, D5). The fifth measure contains an eighth-note pair (F5, E5), a quarter-note pair (G5, F5), and a quarter-note pair (A5, G5). The sixth measure contains an eighth-note pair (B5, A5), a quarter-note pair (C6, B5), and a quarter-note pair (D6, C6). The seventh measure contains an eighth-note pair (E6, D6), a quarter-note pair (F6, E6), and a quarter-note pair (G6, F6). The eighth measure contains an eighth-note pair (A6, G6), a quarter-note pair (B6, A6), and a quarter-note pair (C7, B6). The scale concludes with a whole note C7.

optional

Second line of musical notation for the chromatic scale in bass clef, 4/4 time. It begins with a D6 quarter note, followed by an eighth-note pair (C6, D6), a quarter-note pair (B5, A5), and a quarter-note pair (G5, F5). The second measure contains an eighth-note pair (E5, D5), a quarter-note pair (C5, B4), and a quarter-note pair (A4, G4). The third measure contains an eighth-note pair (F4, E4), a quarter-note pair (D4, C4), and a quarter-note pair (B3, A3). The fourth measure contains an eighth-note pair (A3, G3), a quarter-note pair (F3, E3), and a quarter-note pair (D3, C3). The fifth measure contains an eighth-note pair (E3, D3), a quarter-note pair (C3, B2), and a quarter-note pair (A2, G2). The sixth measure contains an eighth-note pair (F2, E2), a quarter-note pair (D2, C2), and a quarter-note pair (B1, A1). The seventh measure contains an eighth-note pair (G2, F2), a quarter-note pair (E2, D2), and a quarter-note pair (C2, B1). The eighth measure contains an eighth-note pair (D2, C2), a quarter-note pair (B1, A1), and a quarter-note pair (G1, F1). The scale concludes with a whole note G1.

Third line of musical notation for the chromatic scale in bass clef, 4/4 time. It begins with a G1 quarter note, followed by an eighth-note pair (F1, G1), a quarter-note pair (E1, D1), and a quarter-note pair (C2, B1). The second measure contains an eighth-note pair (B1, A1), a quarter-note pair (G1, F1), and a quarter-note pair (E1, D1). The third measure contains an eighth-note pair (D2, C2), a quarter-note pair (B1, A1), and a quarter-note pair (G1, F1). The fourth measure contains an eighth-note pair (A1, G1), a quarter-note pair (F1, E1), and a quarter-note pair (D2, C2). The fifth measure contains an eighth-note pair (G1, F1), a quarter-note pair (E1, D1), and a quarter-note pair (C2, B1). The sixth measure contains an eighth-note pair (B1, A1), a quarter-note pair (A1, G1), and a quarter-note pair (G1, F1). The seventh measure contains an eighth-note pair (C2, B1), a quarter-note pair (B1, A1), and a quarter-note pair (A1, G1). The scale concludes with a whole note G1.

MBDA 9-10 Honor Band Euphonium TC Scales

A Major

Musical notation for the A Major scale in 4/4 time. The key signature has three sharps (F#, C#, G#). The scale is written in a single staff, showing the ascending and descending lines with slurs and accents.

Musical notation for the A Major scale in 4/4 time, showing the descending line of the scale.

Bb Major

Musical notation for the Bb Major scale in 4/4 time. The key signature has two flats (Bb, Eb). The scale is written in a single staff, showing the ascending and descending lines with slurs and accents.

Chromatic

Musical notation for the chromatic scale in 4/4 time. The scale is written in a single staff, showing the ascending and descending lines with slurs and accents.

optional

Musical notation for the chromatic scale in 4/4 time, showing an optional section of the scale with slurs and accents.

Musical notation for the chromatic scale in 4/4 time, showing the descending line of the scale.

MBDA 9-10 Honor Band Tuba Scales

♩ = 120

F Major

Musical notation for the F Major scale in bass clef, 4/4 time. The scale consists of 12 notes: F2, G2, A2, Bb2, C3, D3, E3, F3, G3, A3, Bb3, C4. The notes are written on a single staff with a key signature of one flat and a time signature of 4/4.

A Major

Musical notation for the A Major scale in bass clef, 4/4 time. The scale consists of 12 notes: A2, B2, C#3, D3, E3, F#3, G#3, A3, B3, C#4, D#4, E4. The notes are written on a single staff with a key signature of three sharps and a time signature of 4/4.

Musical notation for the continuation of the A Major scale in bass clef, 4/4 time. The scale consists of 12 notes: F#3, G#3, A3, B3, C#4, D#4, E4, F#4, G#4, A4, B4, C#5. The notes are written on a single staff with a key signature of three sharps and a time signature of 4/4.

Chromatic

Musical notation for the ascending chromatic scale in bass clef, 4/4 time. The scale consists of 12 notes: F2, F#2, G2, G#2, A2, A#2, B2, B#2, C3, C#3, D3, D#3. The notes are written on a single staff with a key signature of one flat and a time signature of 4/4.

Musical notation for the descending chromatic scale in bass clef, 4/4 time. The scale consists of 12 notes: D#3, D3, C#3, C3, B#2, B2, A#2, A2, G#2, G2, F#2, F2. The notes are written on a single staff with a key signature of one flat and a time signature of 4/4.

♩ = 140

MBDA 9-10 Honor Band Mallet Scales

A Major



Db Major



Chromatic



MBDA 9-10 Honor Band String Bass Scales

♩ = 120

F Major

A musical staff in bass clef with a 4/4 time signature. The key signature has one flat (Bb). The scale is written in eighth notes, starting on F2 and ascending to F3, then descending back to F2. The notes are: F2, G2, Ab2, Bb2, C3, D3, Eb3, F3, Eb3, D3, C3, Bb2, Ab2, G2, F2.

E Major

A musical staff in bass clef with a 4/4 time signature. The key signature has three sharps (F#, C#, G#). The scale is written in eighth notes, starting on E2 and ascending to E3, then descending back to E2. The notes are: E2, F#2, G#2, A#2, B3, C#3, D#3, E3, D#3, C#3, B3, A#2, G#2, F#2, E2.

A musical staff in bass clef with a 4/4 time signature. The key signature has three sharps (F#, C#, G#). The scale is written in eighth notes, starting on E2 and ascending to E3, then descending back to E2. The notes are: E2, F#2, G#2, A#2, B3, C#3, D#3, E3, D#3, C#3, B3, A#2, G#2, F#2, E2.

Chromatic

A musical staff in bass clef with a 4/4 time signature. The scale is written in eighth notes, starting on F2 and ascending chromatically to F3. The notes are: F2, F#2, G2, G#2, A2, A#2, B2, B#2, C3, C#3, D3, D#3, E3, E#3, F3.

A musical staff in bass clef with a 4/4 time signature. The scale is written in eighth notes, starting on F3 and descending chromatically to F2. The notes are: F3, E#3, E3, D#3, D3, C#3, C3, B#2, B2, A#2, A2, G#2, G2, F#2, F2.